

Silhouette



Experience the ultimate camping lifestyle in the luxury of this feature packed Camper.

The Coromal Silhouette range offers:

- Unique slide-out kitchen for spaciousness never before achieved in a camper
- Easy-to-operate slide-out bed mechanism on heavy duty tracking
- Increased floor space, larger kitchen and bench area
- Luxury queen-size front bed
- Outstanding towing ability with Coromal's renowned independent suspension
- Revolutionary new one-piece fibreglass roof for extra strength
- Handy battery compartment is great when camping out
- One-piece, simple-to-operate main door
- Separate travel door for extra table space when on site
- Huge front locker includes gas bottle storage with heaps of room to spare
- Strength and durability with streamlined aerodynamic styling

"Experience the lifestyle. Discover the freedom"

COROMAL
C A R A V A N S



Silhouette Features

Incorporated into all models is the unique new slide out kitchen providing increased interior space

- Revolutionary fibreglass roof consisting of inner & outer skin with an integrated core construction
- Moulded fibreglass front & rear sections
- Fibreglass side panels bonded to the aluminium wall frame construction
- Time tested & proven independent suspension
- Electric brakes
- Full length galvanised steel chassis
- Large front locker
- Steel belted light truck radial tyres
- Ply floor bonded & fastened to chassis
- Galvanised steel wheel arches
- Aluminium water tank protector
- Positive locking cupboard door catches
- Self-closing hinges
- Co-axial TV point
- Travel door/table
- Fridge - 3 way RM2350
- Stove - 4 burner (1 electric, 3 gas) & grill
- Large bowl stainless steel sink with moulded cover
- Microwave oven
- Roof hatch
- Heavy grade plastic windows
- Canvas - separate panels UV stabilised (Aust made)
- Sleeve covers to lifting arms
- Canvas located in track to leading edge of bed ends
- Canvas located into track on lower main body section
- Zip panel side wall (rear of door)
- Full width weather strip under bunks
- Polyurethane moulded stone guard
- Mains pressure tap
- Tap on A-frame
- External power point
- Insulated roof and walls
- Bed lamps to bed compartments
- 1 piece main door
- Annexe light

Options

- External cold shower to most models
- Pioneer - stronger and tougher for the more adventurous, the Pioneer option is available on all Silhouette models.

Pioneer Features

- Extra internal furniture fixing such as additional bolting, screwing & reinforcing blocks
- Chassis - main bearers, A-frame & front cross members all 150mm x 50mm x 3mm RHS
- Independent suspension 50mm axle
- Parallel bearing set
- Tyres - Bridgestone LT 265/75 R16 - 6 ply radials
- Alko off road electric brake magnets
- Treg coupling 360° rotational hitch
- Heavy duty sports wheels
- Extra self closing hinges to most cupboard doors
- Galvanised water tank protector

The Pioneer range is designed to travel on and off sealed roads. They are not however designed to travel over all terrain. Traveling over rough, rocky, jagged, pinnacled or pot holed surfaces may amount to misuse or driver neglect. Any damage occurring as a result is excluded from the manufacturer's warranty. Commonsense should prevail in those conditions.

Silhouette Specifications

| MODEL No | INTERIOR LENGTH | BODY LENGTH | BODY WIDTH | TOWING LENGTH | TOWING HEIGHT (INC HATCH) | TARE WEIGHT |
|----------|-----------------|-------------|------------|---------------|---------------------------|-------------|
| S39 | 3070mm | 3900mm | 2160mm | 5050mm | 1770mm | 1050kg |
| S42 | 3400mm | 4230mm | 2160mm | 5380mm | 1770mm | 1070kg |
| S451 | 3730mm | 4560mm | 2160mm | 5710mm | 1770mm | 1100kg |
| PS39 | 3070mm | 3900mm | 2160mm | 5300mm | 1900mm | 1180kg |
| PS42 | 3400mm | 4230mm | 2160mm | 5630mm | 1900mm | 1220kg |
| PS451 | 3730mm | 4560mm | 2160mm | 5950mm | 1900mm | 1260kg |

Weights shown are indicative and are meant as a guide only. They will vary from model to model, in particular when options are added. Due to progressive product improvements all specifications are subject to change without notice, and are not necessarily drawn to scale.

Manufactured by Coromal Caravans Pty Ltd

ABN 82 008 682 513

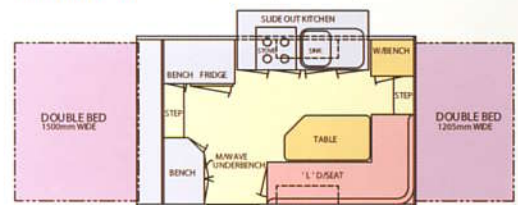
25 Harrison Road Forrestfield WA 6058

Tel: 08 9352 0900

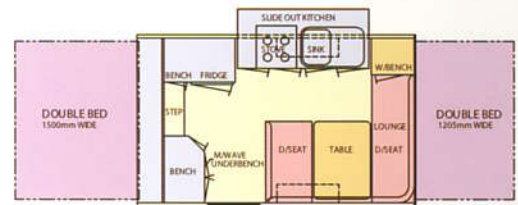
www.coromal.com.au



Silhouette 39 3.9m x 2.16m (12'9" x 7')

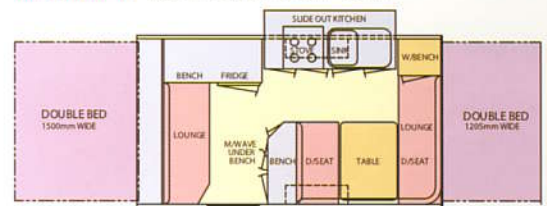


S391 Pioneer Model PS391

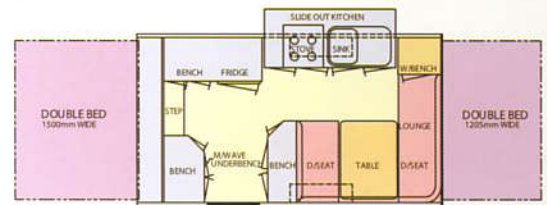


S392 Pioneer Model PS392

Silhouette 42 4.23m x 2.16m (13'11" x 7')

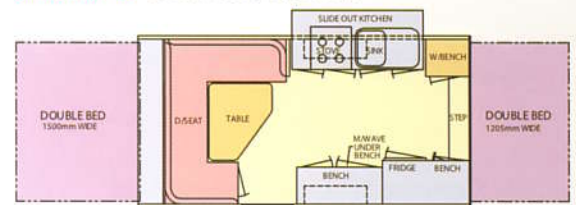


S421 Pioneer Model PS421



S422 Pioneer Model PS422

Silhouette 45 4.56m x 2.16m (15' x 7')



S451 Pioneer Model PS451

Coromal sales centre